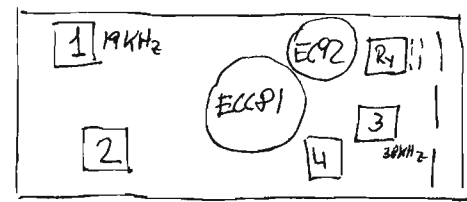
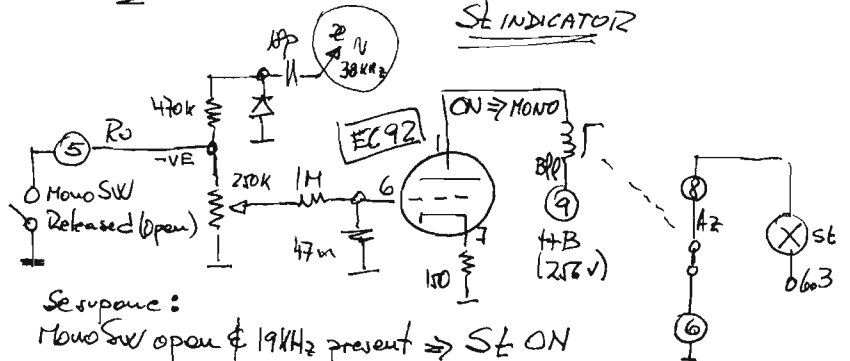
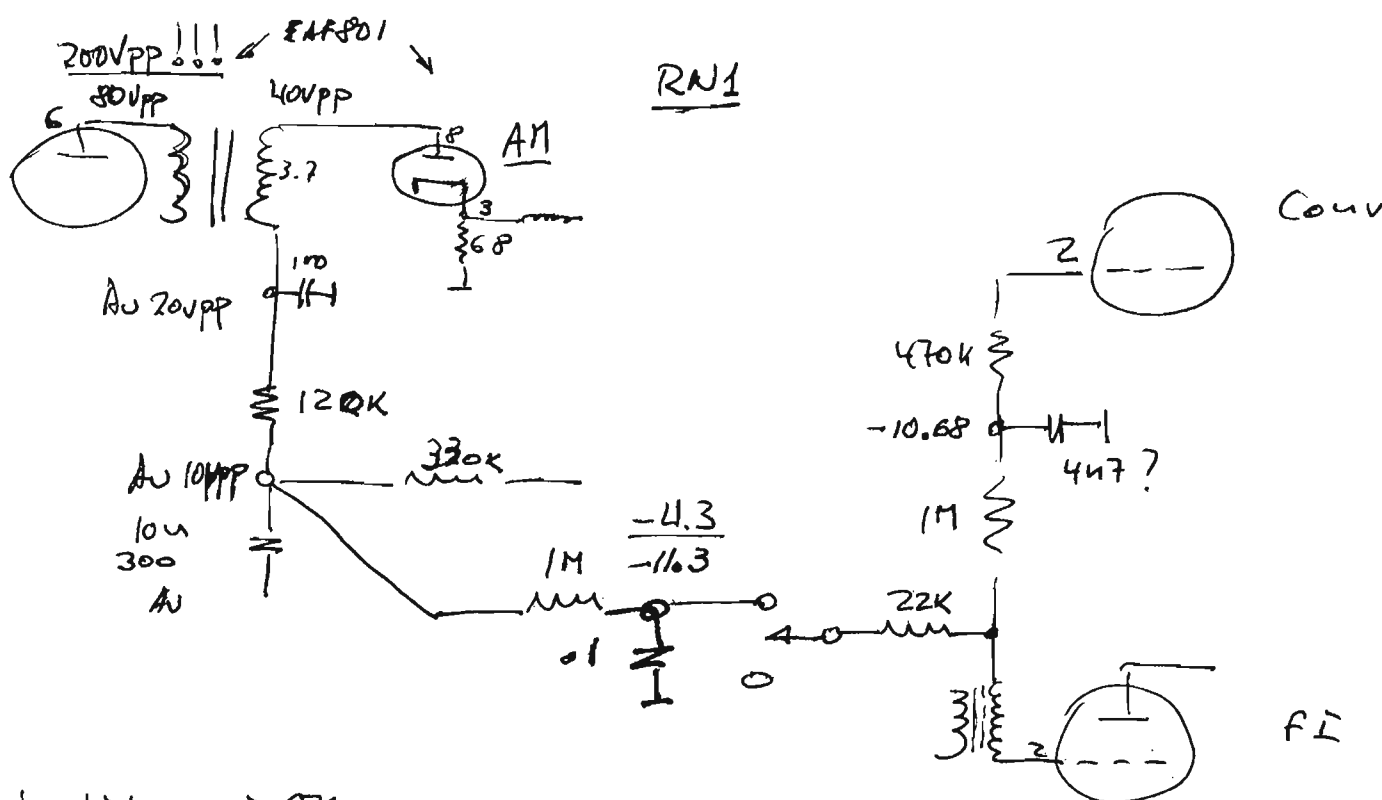


ST DECODER 2
BLAU PUNKT ST 2011

ST INDICATOR

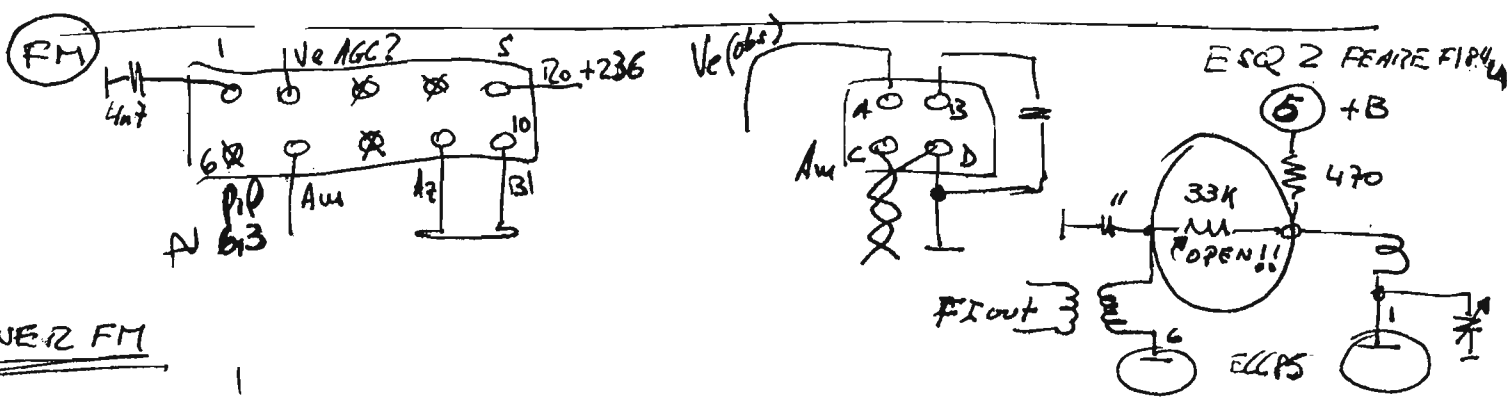
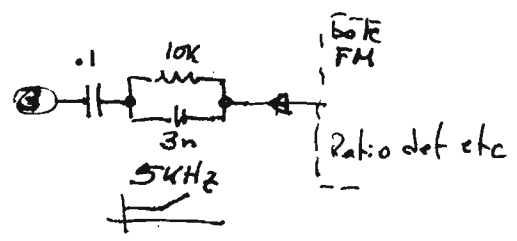


Se supone:
Mono SW open & 19kHz present ⇒ ST ON



Medidas → OK

Medidas ⇒ MAL (Desapareció solo)



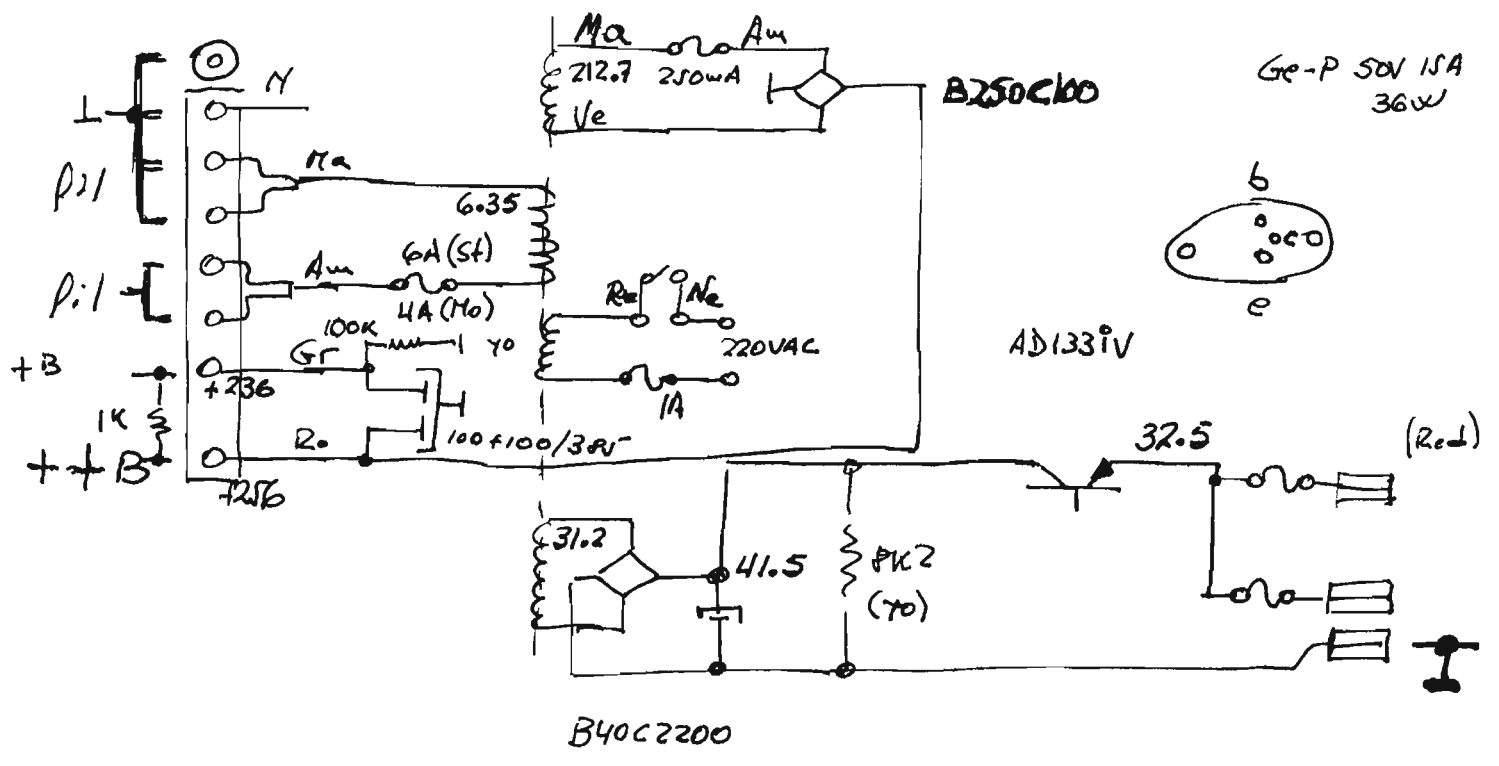
Decoder St

1 -	Au xte	-	
2 -	Ro	-	
3 -	A2	-	COMPOSITE IN →
4 -	MALLA	-	
5 -	Ro	-	
6 -	B1 gn	-	
7 -	Nc	-	6.3 pF
8 -	A2	-	
9 -	B1 pin	-	EC92
10 -	Ma	-	+B

Autop | RADIO

DECODEO

F.A.



Amp. 4x AD149 (2x channel)

